

**CDCA7L Antibody (C-term)**  
**Affinity Purified Rabbit Polyclonal Antibody (Pab)**  
**Catalog # AP20468b**

**Specification**

---

**CDCA7L Antibody (C-term) - Product Information**

Application	<b>WB,E</b>
Primary Accession	<a href="#">B3KTR5</a>
Other Accession	<a href="#">O96GN5</a>
Reactivity	<b>Human</b>
Host	<b>Rabbit</b>
Clonality	<b>Polyclonal</b>
Isotype	<b>Rabbit IgG</b>
Antigen Region	<b>290-317</b>

**CDCA7L Antibody (C-term) - Additional Information**

**Other Names**

CDCA7L;HR1; JPO2; R1; Cell division cycle-associated 7-like protein; Cell division cycle-associated 7-like protein; Protein JPO2; Cell division cycle-associated 7-like protein; Transcription factor RAM2

**Target/Specificity**

This CDCA7L antibody is generated from rabbits immunized with a KLH conjugated synthetic peptide between 290-317 amino acids from the C-terminal region of human CDCA7L.

**Dilution**

WB~~1:1000  
E~~Use at an assay dependent concentration.

**Format**

Purified polyclonal antibody supplied in PBS with 0.09% (W/V) sodium azide. This antibody is purified through a protein A column, followed by peptide affinity purification.

**Storage**

Maintain refrigerated at 2-8°C for up to 2 weeks. For long term storage store at -20°C in small aliquots to prevent freeze-thaw cycles.

**Precautions**

CDCA7L Antibody (C-term) is for research use only and not for use in diagnostic or therapeutic procedures.

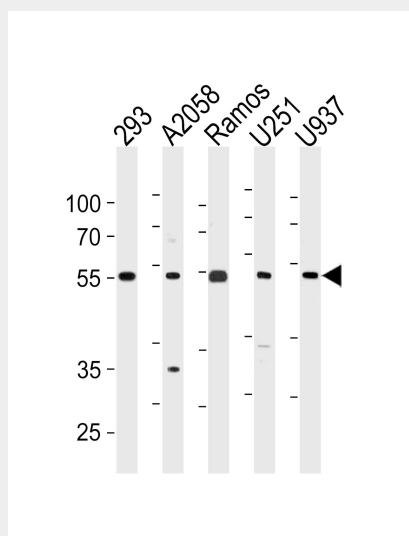
**CDCA7L Antibody (C-term) - Protein Information**

**CDCA7L Antibody (C-term) - Protocols**

Provided below are standard protocols that you may find useful for product applications.

- [Western Blot](#)
- [Blocking Peptides](#)
- [Dot Blot](#)
- [Immunohistochemistry](#)
- [Immunofluorescence](#)
- [Immunoprecipitation](#)
- [Flow Cytometry](#)
- [Cell Culture](#)

### CDCA7L Antibody (C-term) - Images



CDCA7L Antibody (C-term) (Cat. #AP20468b) western blot analysis in 293,A2058,Ramos,U251,U937 cell line lysates (35ug/lane).This demonstrates the CDCA7L antibody detected the CDCA7L protein (arrow).

### CDCA7L Antibody (C-term) - Background

Plays a role in transcriptional regulation as a repressor that inhibits monoamine oxidase A (MAOA) activity and gene expression by binding to the promoter. Plays an important oncogenic role in mediating the full transforming effect of MYC in medulloblastoma cells. Involved in apoptotic signaling pathways; May act downstream of P38-kinase and BCL-2, but upstream of CASP3/caspase-3 as well as CCND1/cyclin D1 and E2F1.

### CDCA7L Antibody (C-term) - References

- Huang A., et al. Cancer Res. 65:5607-5619(2005).  
Chen K., et al. J. Biol. Chem. 280:11552-11559(2005).  
Cathomen T., et al. Submitted (OCT-2002) to the EMBL/GenBank/DDBJ databases.  
Ota T., et al. Nat. Genet. 36:40-45(2004).  
Scherer S.W., et al. Science 300:767-772(2003).